

deberkel[®]

finest professional clothing



SHOULDERING RESPONSIBILITY HAS
NEVER BEEN SO COMFORTABLE.

The high-quality care collection from de berkel for more style, comfort and sustainability.

GLOBAL THINKING, LOCAL ACTION

Under the umbrella of the United Nations (UN), the international community has committed itself to 17 global goals for a better future. They serve to ensure global, sustainable development on an economic, ecological and social level.

We are fully committed to the Sustainable Development Goals (SDG) agenda. And wherever we, as an international company, can make a meaningful contribution to the fulfilment of these major goals at a local level, we do so.



OEKO-TEX® MADE IN GREEN

- Our OEKO-TEX® MADE IN GREEN labelled items were extensively tested according to OEKO-TEX® safety criteria for consumer health and produced in certified and audited production facilities. This label supports both better working conditions and a healthier planet.

Learn more at
www.oeko-tex.com



OEKO-TEX® STeP

- Our factories have been certified according to OEKO-TEX® STeP following a comprehensive analysis and assessment of chemical management, environmental performance, environmental management, worker health and safety, social responsibility, and quality management.

Learn more at
www.oeko-tex.com



OEKO-TEX® STANDARD 100

- Our raw materials, certified according to OEKO-TEX® STANDARD 100, have been independently tested for harmful substances according to extensive scientific criteria.

Learn more at
www.oeko-tex.com

SUSTAINABLY CERTIFIED

It is the responsibility of all of us to safeguard the natural foundations of life for future generations. At De Berkel, we want to do our part to preserve the environment's ability to regenerate. That's why we do everything we can to produce long-lasting workwear in a way that conserves resources as much as possible. Our declared aim is not just to be a little bit sustainable, but to be 360° sustainable.

We don't just leave it at fine words, we put our money where our mouth is. In order to communicate our commitment to sustainability as transparently as possible, we have it regularly audited by competent experts and institutes. The large number of certificates from leading institutes proves this: We are on the right track.

Grüner Knopf

- The seal is issued by the Federal Ministry for Economic Cooperation and Development.
- The Green Button seal makes sustainably produced textiles visible in trade.
- The Green Button sets binding requirements to ensure that people and nature are not harmed.

Learn more at:
www.gk-info.eu/teamdress

WIR FÜHREN PRODUKTE MIT DEM SIEGEL:



TENCEL™

- TENCEL™ Lyocell and Modal fibers are made with at least 50% less carbon emissions and water consumption*
- TENCEL™ Lyocell and Modal fibers are derived from the natural raw material wood
- TENCEL™ Lyocell and Modal fibers support a natural dry feeling through moisture control

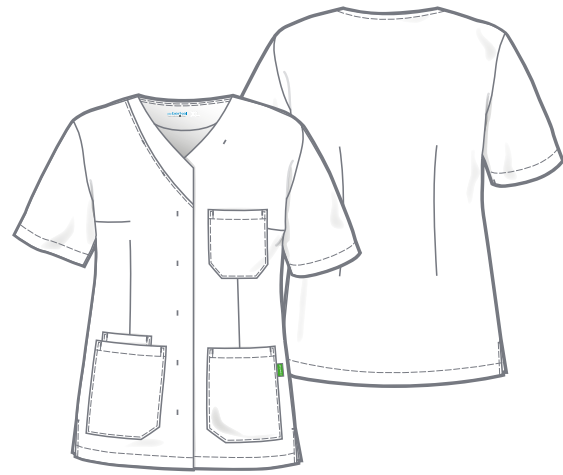
TENCEL™ is a brand of Lenzing AG

*Compared to generic (unbranded) lyocell and modal. Results based on LCA standards (ISO 14040/44) and available via Higg MSI (Version 3.8)



- The use of 4% elastolefin gives the fabric high elasticity, ensuring maximum freedom of movement and excellent functionality.





LEA

Ladies' tunic

Sizes: XS - 3XL

- Back length size L: 71,5 cm
- V-neck
- Hidden snap fastener placket
- Short sleeved
- 1 chest pocket
- 2 side pockets, left with key attachment, right with phone pocket
- Side slits



Created by KI



3460-890
berry



3460-003
light blue



3460-149
light green



3460-723
petrol green



3460-380
coral



Material: 48% polyester
48% lyocell (TENCEL™)
4% elastolefin
180 g/m²

Care:



LEO

Unisex tunic

Sizes: XS - 3XL

- Back length size L: 77 cm
- V-neck
- Hidden snap fastener placket
- Short sleeved
- 1 chest pocket
- 2 side pockets, left with key attachment, right with phone pocket
- Side slits



3461-723
petrol green



3461-890
berry



3461-003
light blue



3461-149
light green



3461-380
coral



3462-380
coral



MILA

Ladies' slip-on tunic

Sizes: XS - 3XL

- Back length size L: 67 cm
- V-neck
- Short sleeved
- 1 chest pocket
- 2 side pockets, left with key attachment, right with phone pocket
- Side slits



3462-003
light blue



3462-149
light green



3462-723
petrol green



3462-890
berry



3463-149
light green



MILO

Unisex slip-on tunic

Sizes: XS - 3XL

- Back length size L: 72,5 cm
- V-neck
- Short sleeved
- 1 chest pocket
- 2 side pockets, left with key attachment, right with phone pocket
- Side slits



3463-003
light blue



3463-723
petrol green



3463-380
coral



3463-890
berry



Created by KI

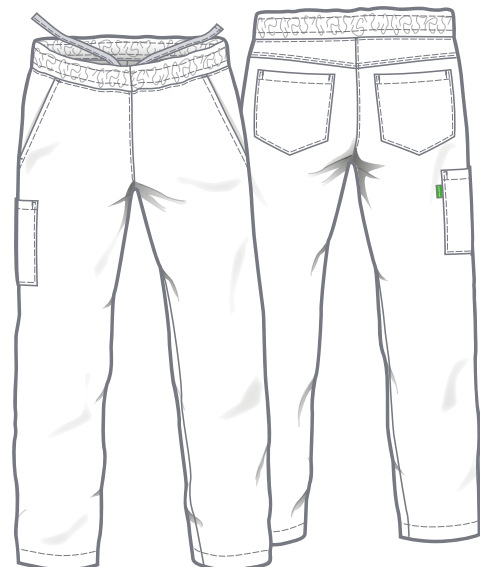
Material: 48% polyester
48% lyocell (TENCEL™)
4% elastolefin
180 g/m²

Care:



GRÜNER KNOPF
SOZIAL. ÖKOLOGISCH. STAATLICH.
UNABHÄNGIG ZERTIFIZIERT.





LYNN

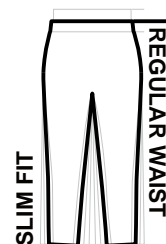
Ladies' slip-on trousers

LYAN

Men's slip-on trousers

Sizes: XS - 3XL
 XS-L - XL-L (length + 4 cm)
 XS-K - 2XL-K (length - 5 cm)

- Waistband with elasticated band and drawstring (internal)
- 2 side pockets
- 2 hip pockets
- 1 right leg pocket
- Inner side tabs



LYNN



7762-003
light blue



7762-149
light green



7762-723
petrol green



7762-380
coral



7762-890
berry



7763-003
light blue



7763-149
light green



7763-723
petrol green



7763-380
coral



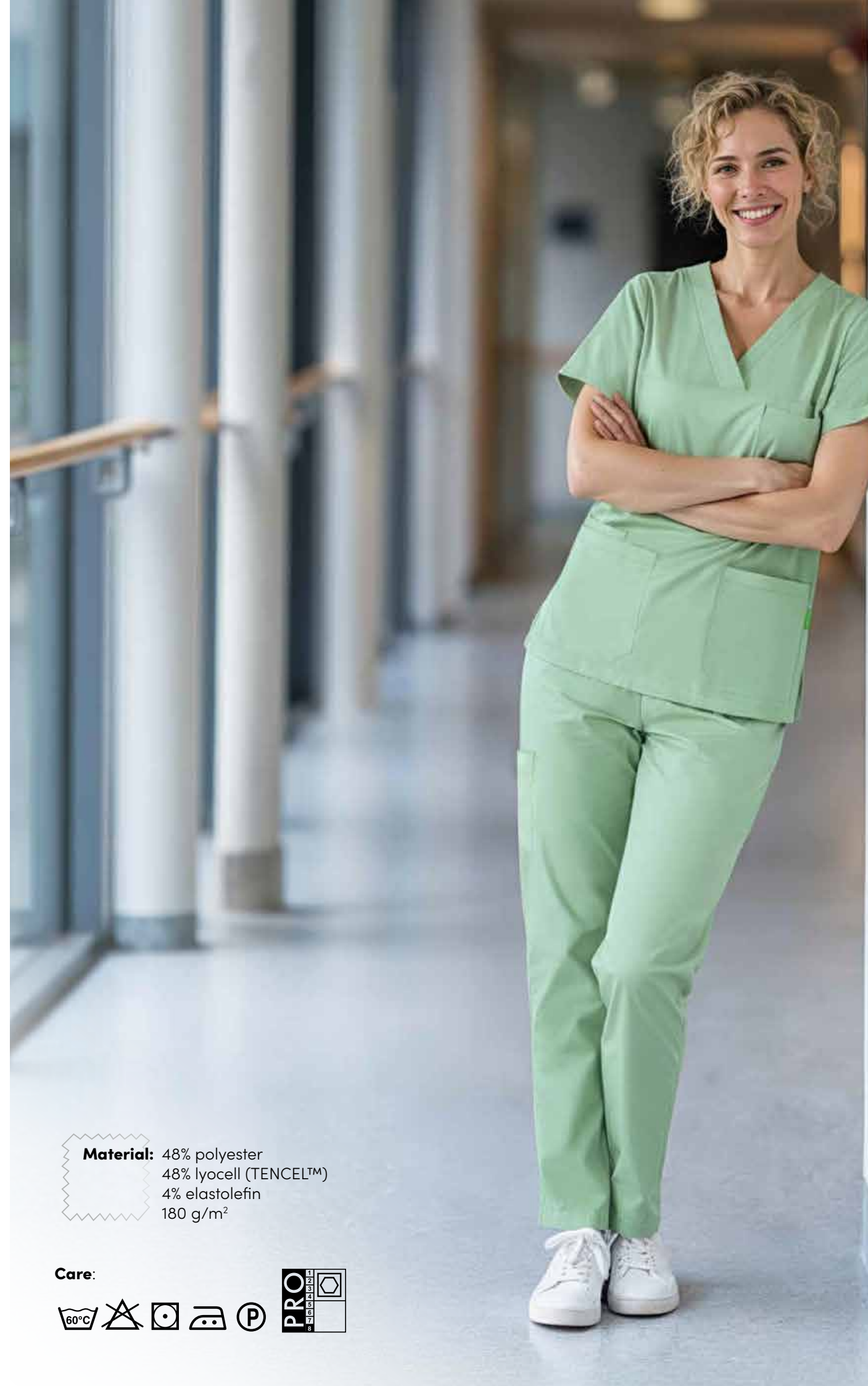
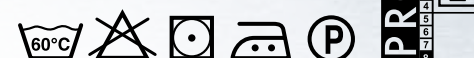
7763-890
berry



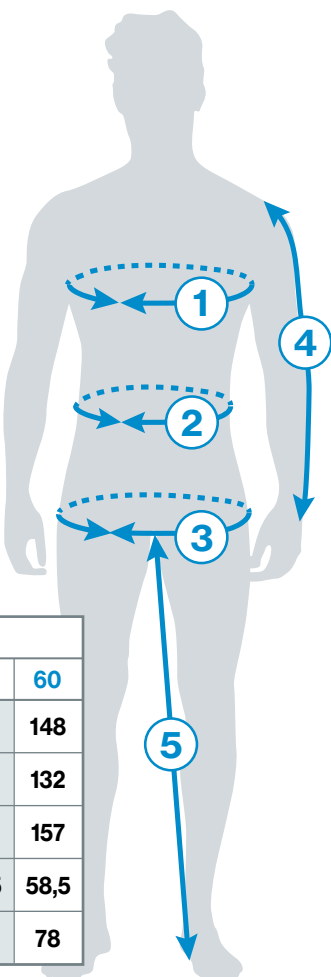
LYAN

Material: 48% polyester
 48% lyocell (TENCEL™)
 4% elastolefin
 180 g/m²

Care:



MEASURES in cm



LADIES		Sizes													
		34	36	38	40	42	44	46	48	50	52	54	56	58	60
1	Chest	80	84	88	92	96	100	106	112	118	124	130	136	142	148
2	Waist	64	68	72	76	80	84	90	96	102	108	114	120	126	132
3	Hip	89	93	97	101	105	109	115	121	127	133	139	145	151	157
4	Sleeve length	58,5	58,5	58,5	58,5	58,5	58,5	58,5	58,5	58,5	58,5	58,5	58,5	58,5	58,5
5	Inside leg	78	78	78	78	78	78	78	78	78	78	78	78	78	78

MEN	Sizes															
	XS		S		M		L		XL		2XL		3XL		4XL	
	40	42	44	46	48	50	52	54	56	58	60	62	64	66	68	70
1 Chest	80	84	88	92	96	100	104	108	112	116	120	124	128	132	136	140
2 Waist	68	72	76	80	84	88	92	96	100	106	112	118	124	130	136	142
3 Hip	88	92	96	100	104	108	112	116	120	124	128	132	136	140	144	148
4 Sleeve length	59	61	62	63	64	65	66	67	68	69	70	71	72	73	74	75
5 Inside leg	72	74	76	77	78	79	80	81	82	83	84	84	84	84	84	84
LONG SIZES	XS-L		S-L		M-L		L-L		XL-L		Measurements 1 - 3 the same as normal sizes					
	82	86	90	94	98	102	106	110	114	118						
	41	43	45	47	49	51	53	55	57	59						
4 Sleeve length	63	65	66	67	68	69	70	71	72	73						
5 Inside leg	76	78	80	81	82	83	84	85	86	87						
SHORT SIZES	XS-K		S-K		M-K		L-K		XL-K		2XL-K		3XL-K			
	20	21	22	23	24	25	26	27	28	29	30	31	32	33		
	57	59	60	61	62	63	64	65	66	67	68	69	70	71		
4 Sleeve length	57	59	60	61	62	63	64	65	66	67	68	69	70	71		
5 Inside leg	67	69	71	72	73	74	75	76	77	78	79	79	79	79		

Size conversion table																
MEN	XS		S		M		L		XL		2XL		3XL		4XL	
	40	42	44	46	48	50	52	54	56	58	60	62	64	66	68	70
LADIES	34	36	38	40	42	44	46	48	50		52		54		56	58

SIZES + MEASURES





deberkel®
finest professional clothing

De Berkel B.V.
Gesinkkampstraat 13
7051 HR VARSSEVELD
NETHERLANDS
Tel.: +31 315 244161
E-Mail: info@deberkel.nl
Web: www.deberkel.nl

teamdress®
high performance workwear

teamdress Stein
Deutschland GmbH
Brandstücken 27
22549 HAMBURG
GERMANY
Tel.: +49 40 800905-01
E-Mail: info@teamdress.de
Web: www.teamdress.de

